

中胡

賽馬會中樂360

唐響

(中級)

伍卓賢 曲、編

夢 ♩ = 62 ca. 稍自由
("唏!" 氣聲叫一聲)

fff pp f

5

11

mp

16

25 ♩ = 56 ca.

31

37

(革胡)

42

Musical notation for measure 42, featuring a treble clef, a key signature of one sharp (F#), and a 4/4 time signature. The notation includes a series of eighth and quarter notes with slurs, and dynamic markings *p* and *mf*.

46

Musical notation for measure 46, featuring a treble clef, a key signature of one sharp (F#), and a 4/4 time signature. The notation includes a series of eighth and quarter notes with slurs, and dynamic markings *p* and *mf*.

50

Musical notation for measure 50, featuring a treble clef, a key signature of one sharp (F#), and a 4/4 time signature. The notation includes a series of eighth and quarter notes with slurs, and a dynamic marking *f*.

53

Musical notation for measure 53, featuring a treble clef, a key signature of one sharp (F#), and a 4/4 time signature. The notation includes a series of eighth and quarter notes with slurs, and dynamic markings *mf* and *f*.

56

Musical notation for measure 56, featuring a treble clef, a key signature of one sharp (F#), and a 4/4 time signature. The notation includes a series of eighth and quarter notes with slurs, and dynamic markings *mp* and *p*.

60

Musical notation for measure 60, featuring a treble clef, a key signature of one sharp (F#), and a 4/4 time signature. The notation includes a series of eighth and quarter notes with slurs, and dynamic markings *mp* and *p*.

64

Musical notation for measure 64, featuring a treble clef, a key signature of one sharp (F#), and a 4/4 time signature. The notation includes a series of eighth and quarter notes with slurs, and a dynamic marking *mf*.

68

Musical notation for measure 68, featuring a treble clef, a key signature of one sharp (F#), and a 4/4 time signature. The notation includes a series of eighth and quarter notes with slurs, and a dynamic marking *mf*.

72

76

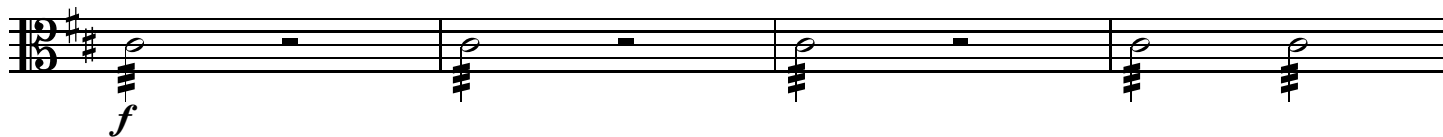
80

83

87

91

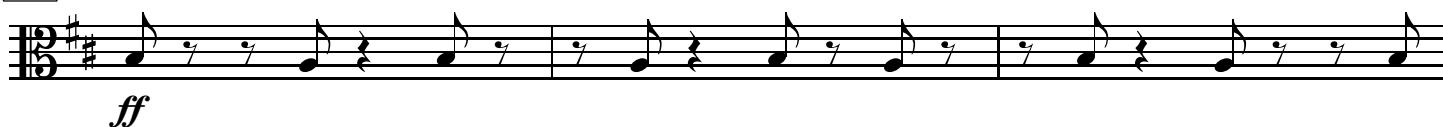
99

103 *tutti*

107



111 ♩ = 156 ca.



114



117



120



123



126



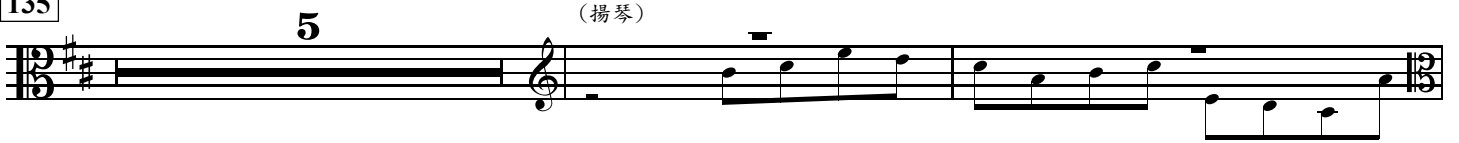
129



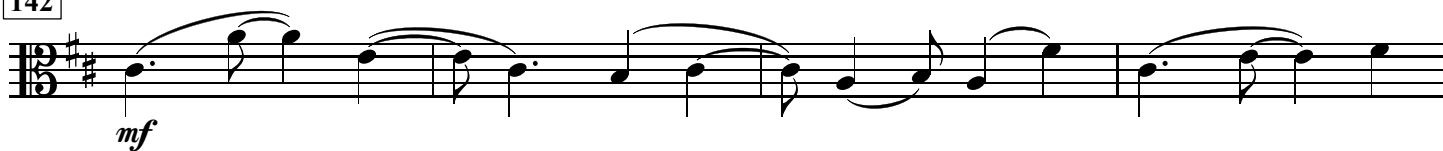
132



135



142



146



150



154



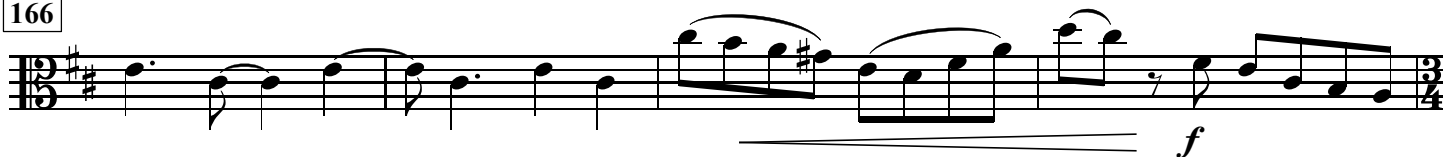
158



162



166



170



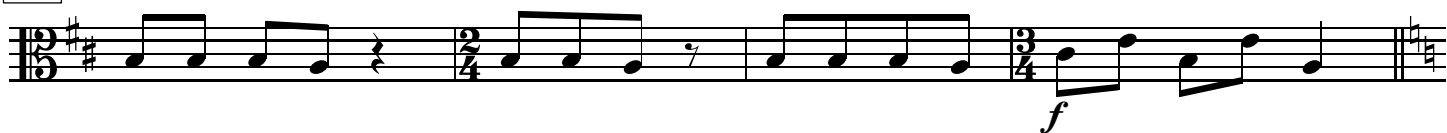
175



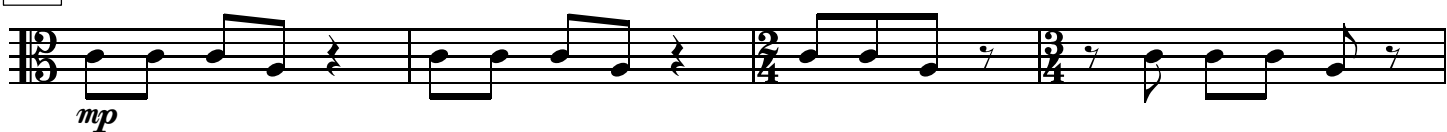
180



184



188



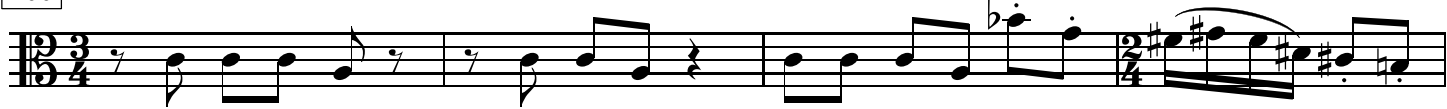
192



196



200



204



208



212



216



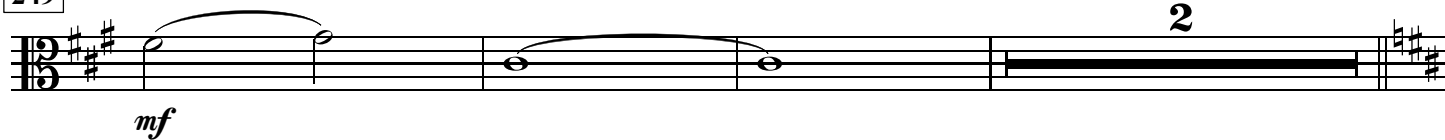
220



224



249



254



257



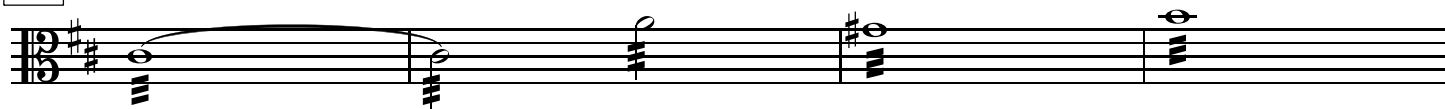
260



263



266



270



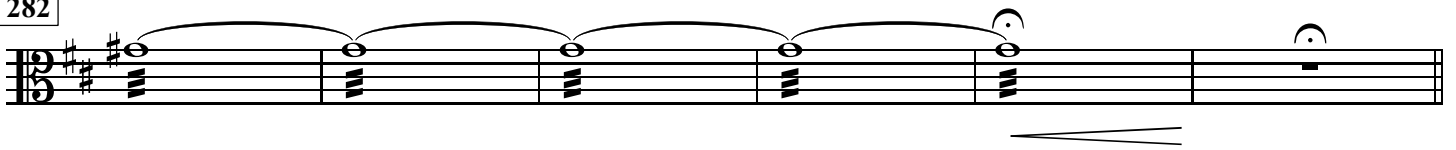
274



278



282



288

舞

♩ = 62 ca.

24

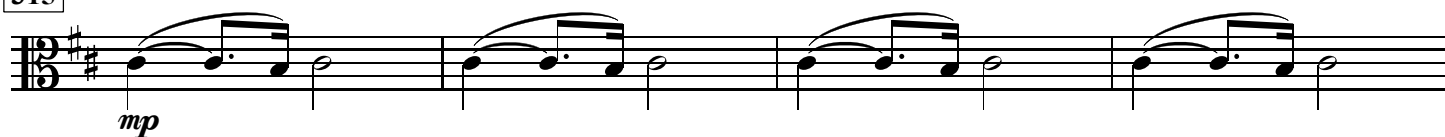
(琵琶)



313



315



319



323



327



330



334



338



342

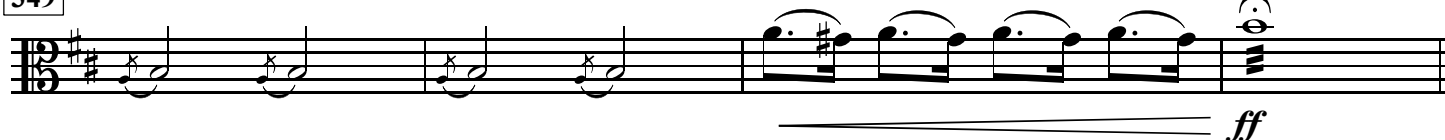


345



稍加快

349



353 同 ♩ = 56 ca. *f*

357 稍加快

361 ♩ = 66 ca.

363

365 ♩ = 69 ca.

367

369

370

371

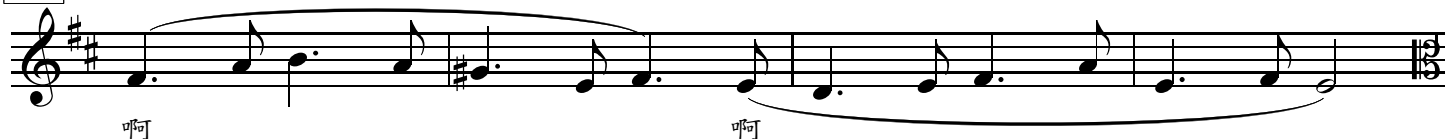
372

373

[唱]



377



381



383



385



386



387



388



稍慢

389

